

Town of Washington

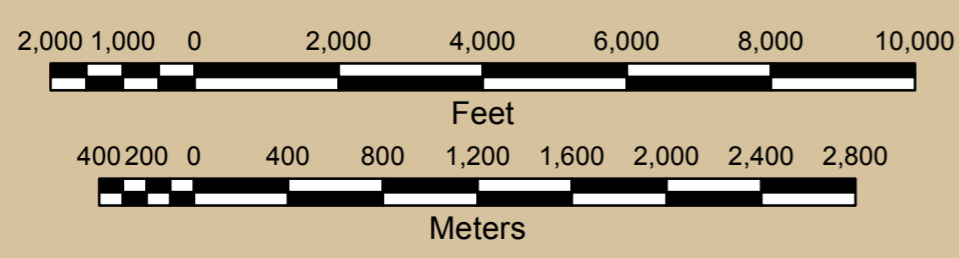
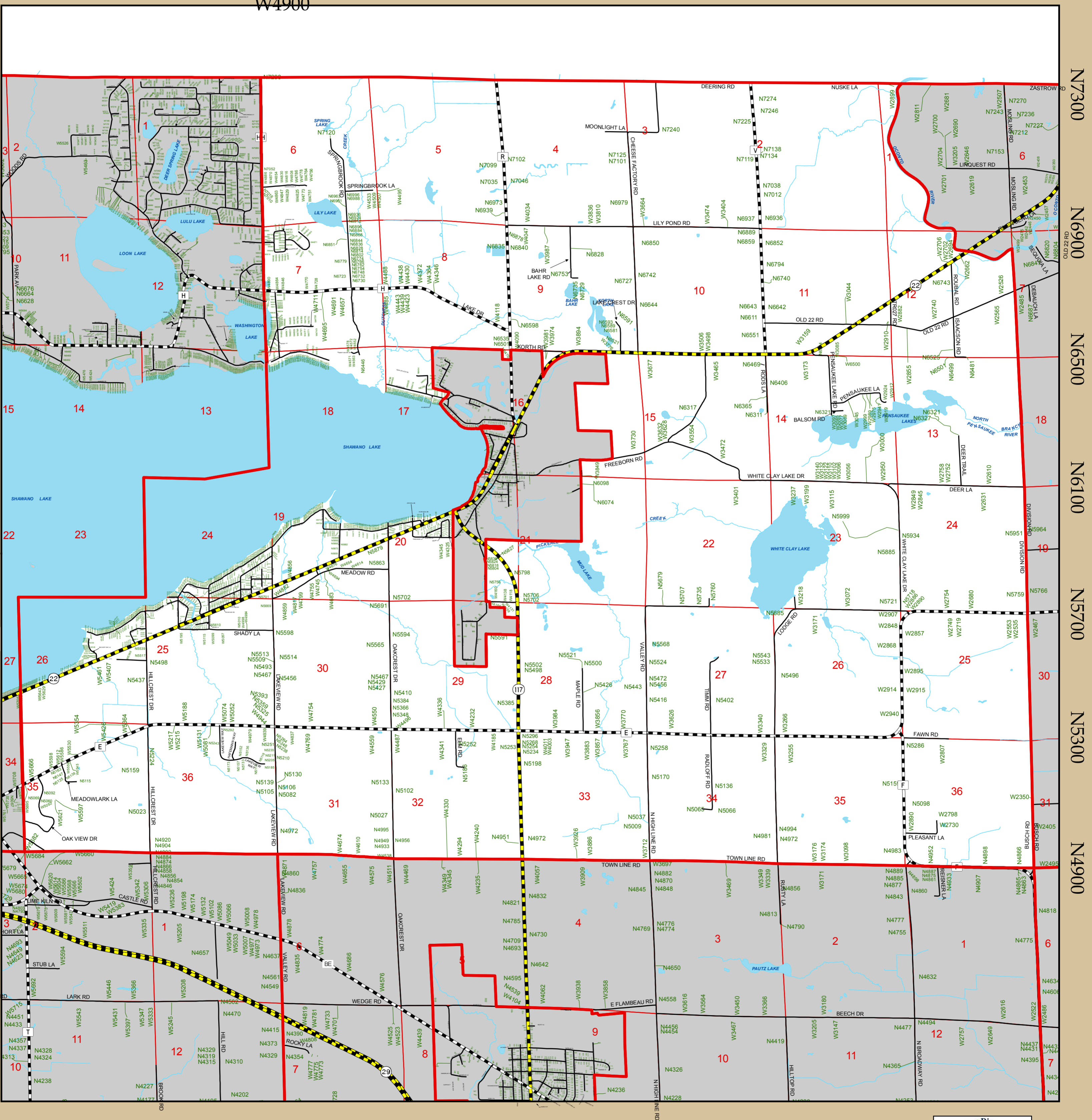
T.27 N R.17 E.

Legend

- Federal/State Highways
- County Highways
- Town/Municipal Roads
- Private Roads
- Railroads
- Waterbodies

W5700 W5300 W4900 W4500 W4100 W3700 W3300 W2900 W2500

W4900
W4900



Information depicted on this map was interpreted from digital orthophotography and various other land records. An attempt was made to accurately represent the information shown hereon, however, recent changes in the physical and cultural landscape many not be represented. This map is intended for planning and general use only. Please refer to the original source documents for detailed information. If you have any questions or discover any discrepancies on this map, please contact the Shawano County Technology Services Dept. 715-526-4614.



Cartography: David Poffinbarger, GIS Coordinator
Shawano County Technology Services
Date: 03 August 2015

Town of Washington